

TECHNICAL SPECIFICATION

Cable terminals without isolation – JM type



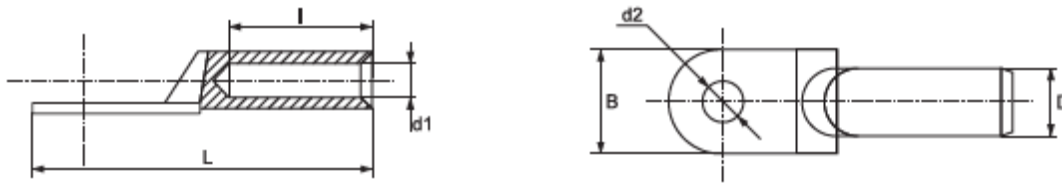
Description:

They are used for joining copper conductors - multicore conductors with different section to electrical devices or connections to combine all cores of the conductor, to provide safe connection at tightening in terminals and safe connection at the base of the terminal. Thus the connection stability against vibrations is increased and the possibility for short circuit is decreased. They are made of copper alloy with galvanic tin coating. The connection is realized through crimping pliers, through mechanic pressing of the terminal and conductor. Two types are offered with standard length SC and extended base JM. They are manufactured under modern technology and have high quality and long exploitation period.

Technical data:

- Material: copper alloy
- Coating: tin
- Application: general for joining conductors to electrical devices

Variants and dimensions:



Shoe type	d1 (mm)	D (mm)	d2 (mm)	L (mm)	Packing / Box (pcs)	Catalogue number
JM – 2.5/6	2.2	4.5	6	24	1000 / 3000 / 24000	59240
JM – 4/6	3.0	4.8	6	24	1000 / 2000 / 16000	59241
JM – 6/6	3.8	5.5	6	24	500 / 2000 / 16000	59035
JM – 6/8	3.8	5.5	8	24	500 / 2000 / 16000	59059
JM – 10/6	4.8	6.8	6	25.5	500 / 1500 / 12000	59036
JM – 10/8	4.8	6.8	8	25.5	500 / 1500 / 12000	59037
JM – 16/6	5.5	7.5	6	30.5	400 / 800 / 6400	59038
JM – 16/8	5.5	7.5	8	30.5	400 / 800 / 6400	59039
JM – 16/10	5.5	7.5	10	30.5	400 / 800 / 6400	59040
JM – 25/8	7	9	8	34	250 / 500 / 4000	59041
JM – 25/10	7	9	10	34	250 / 500 / 4000	59042
JM – 35/8	8.2	10.5	8	38	200 / 400 / 3200	59043
JM – 35/10	8.2	10.5	10	38	200 / 400 / 3200	59044
JM – 35/12	8.2	10.5	12	38	200 / 400 / 3200	59045
JM – 50/8	9.8	12.5	8	45	100 / 200 / 1600	59046
JM – 50/10	9.8	12.5	10	45	100 / 200 / 1600	59047
JM – 50/12	9.8	12.5	12	45	100 / 200 / 1600	59048
JM – 70/10	11.5	14.5	10	50	80 / 100 / 1280	59049
JM – 70/12	11.5	14.5	12	50	80 / 100 / 1280	59050
JM – 95/10	13.8	17.5	10	55.5	50 / 200 / 800	59051
JM – 95/12	13.8	17.5	12	55.5	50 / 200 / 800	59052
JM – 120/10	15.5	19.5	10	63	30 / 60 / 480	59053
JM – 120/12	15.5	19.5	12	63	30 / 60 / 480	59054
JM – 150/12	16.5	21	12	71	10 / 50 / 400	59055
JM – 185/12	18.8	23.5	12	78	10 / 40 / 320	59056
JM – 185/16	18.8	23.5	16	78	10 / 40 / 320	59057
JM – 240/16	21.3	26.5	16	92	10 / 30 / 240	59058

Standard:

EN 61 238-1

